

"A CHURCH FOR ALL"

CHELSEA NEWSLETTER



18 August 2013

A word from Judi....

The person who has no inner life is the slave of their surroundings (Henri-Frederic Amiel)

When we become estranged in our relationships they wither, like the branches on a vine.

We need to stay connected in all of our relationships—including God.

Staying connected to God requires us to seek Him in His Word and to listen for Him throughout our day.

We all have days of organized chaos but we need to also have actual times of quiet and stillness. It may mean waking up earlier than normal to sit in silence. It might mean setting up a monthly spiritual retreat, finding a place of solitude and just being.

Yes, it does demand our time and attention but if we neglect our relationships and connectedness disease and decay settle in.

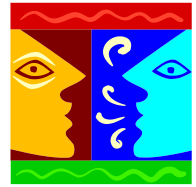
Where in your day are you planning to spend time with God?

The Pastor Is In.

I am available to chat about any issues. Please call me on

0423 375 714

for a suitable time to catch up. Judi



UPCOMING SPECIAL SERVICES:
Sunday 1 September—Father's Day

Be prepared!

The children will be preparing and running the service. There will be two short DVDs, a quiz, sharing and Gospel Songs.



Sunday 22 September—
International Day of Peace

You are invited to bring along something to share that invokes "Peace" for you—poem, song, item, story, etc.

Please let Judi know what you intend to share so she can plan the service.



Chelsea Church of Christ Services

CHURCH SERVICES 10 am Sunday

Sunday 18 August

Speaker Judi

Scripture Hebrews 11:29-12:2

Sunday 25 August

Guest Speaker Talitha Fraser

Scripture Jeremiah 1:4-10

Sunday 1st September—Father's Day

The service will be led by the Children of the Church.

CHILDREN'S SERVICES 10 am Sunday

Sunday 11 August

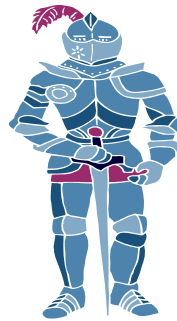
THE SWORD OF THE WORD OF GOD.

Sunday 25 August

THE HELMET OF SALVATION

Sunday 1st September

Special Father's Day service



URGENT CALL

The church is calling for someone willing and able to run the Children's sessions twice a month. If you know of anyone please let Judi know.

We want to continue to teach faith to the children whilst continuing to provide services to adults.

REGULAR WHAT'S ON at Chelsea
Church of Christ

Pastoral Care and Support : available from the

Minister Judi. Call church or Mobile number shown below..

Tuesday: **Kankama** facilities of the Men's Shed 9-12

Wednesday: **Community Breakfast** 8-10 am,
Men's Shed 9am-12

Women's Group 2nd Wed of month

Thursday: **Men's shed** 9–12

AA Meeting in Chapel 11am

Community Lunch 11am–1.00pm

Friday: **Connecting Skills Australia @ the Men's Shed** 9-12

Sunday: **Worship & Kid's Sunday School** 10 am each week

One on One Prayer time 11.30-12noon Front room with Judi

Questions group 12 noon, 2nd Sunday of each month

Church & Men's Shed 3-5 Blantyre Ave Chelsea

Office: 03 9773 0301

Minister: Judi Turnham 0423 375 714

Shed Ministry: Keith Holt

Breakfast & Brunch Ministry :

Visiting Ministry: Val Arnold, Keith Holt, Syd & Lesley Jackson

See phone list for contact details

Website: www.chelseachurchofchrist.org.au

